



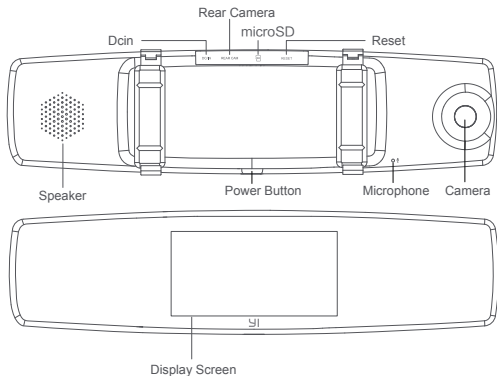
Manufacturer: Shanghai Xiaoyi Technology Co.,Ltd.
Address: 6/F, Building E, No.2889 Jinke Road, Pudong District, Shanghai, China.
www.yitechnology.com



FCC ID:2AFIB-YCS1C17
IC:20436-YCS1C17
C16 EU V2.0

YI Mirror Dash Camera Guidelines

1)、Appearance



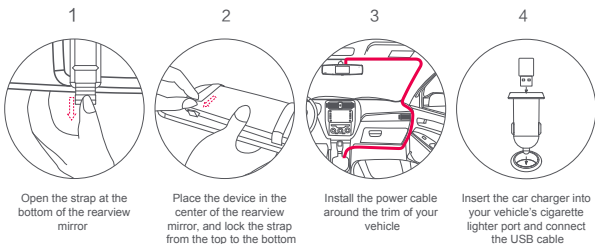
2)、Parameters

- Display Screen:** 4.3 inch, resolution 800*480
- Camera Field of View:** Front: FOV 138°, Rear: FOV 140°
- Sound:** Built-in microphone/ speaker
- Video compression:** H.264 encoding
- Image enhancement:** Dynamic enhancement
- Sensor:** Built-in three-axis accelerometer
- Supported platform:** Android / iOS
- Front Camera:** 1080P 30fps/720P 30fps/480P 30fps
- Rear Camera:** AHD-M(720P)
- Wireless network:** Standard Wi-Fi 802.11n
- Wireless Encryption:** WPA2 Encryption
- Car charger:** Input: 12-24V; Output: 5V
- Storage:** 8-64GB MicroSD card Class 10 and above required
- Mount:** Strap

Note: Please use genuine 8-64GB microSD card (Class 10 and above, ROM 80MB/S or above recommended), otherwise the camera may not be able to record or the recording may be interrupted.

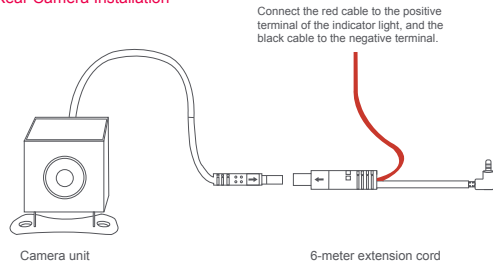
3)、Wiring Installation Diagram

Installing the device



Tip: Make sure you use the correct USB car charger model before using YI Dash Camera.
In some cars, the USB car charger is on even after the engine is turned off, and it consumes battery. If this is the case, please turn off your camera manually after you switch off the engine.

Rear Camera Installation



1. After receiving the product, please check if it works properly before installing.
2. If the video and light need to work together while reversing, connect the red cable to the positive terminal of the indicator light, and the black cable to the negative terminal of the indicator light.
3. Take the help of a professional to install the device. Before installing, please confirm if there are any tiny adjustments required.

4)、Install mobile client

Camera can work independently without APP when you are driving. APP provides additional features like live preview, playback, video clips download and remote settings after connect using Wi-Fi to camera.

1) APP Download

Scan the QR code below or download application from App Store or Google Play.
(APP requires Android 4.1 / iOS 8.0 or above)

2) Updating Firmware

To improve user experience, please use the most current firmware with improvements. When the APP is connected to the Internet, it will automatically check for the latest firmware updates. Please follow the prompts to update.



小蚁APP二维码

5)、Functions

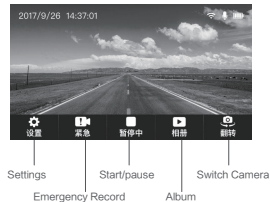
1. Power On/Off

Power on: Long press the POWER button;

Power off: Long press the POWER button.

Short press POWER button: On/off screen display.

2. Main page



3.Settings page

01. Image quality: The available options are: 1920*1080 30fps, 1280*720 fps and 640*480 30fps.
02. Voice recording: On/off voice recording.
03. Wi-Fi: On/off Wi-Fi
- 04: Format SD card: Erase all recordings.
- 05: Collision detection: The default setting is Medium sensitivity. The available options are Low, Medium and High sensitivity. In case a collision or sudden braking is detected, the ongoing video recording or the 10-second emergency video recording will be automatically locked to prevent it from being erased.
06. Date/Time
07. Automatic screen off. (The options are 1/3/5/10 minutes or never)
08. Recording time: Set each video recording time as 1 or 3 minutes.
09. On/off sound effect
10. Touch sounds
11. Language
12. Factory data reset
13. About the DVR



4.Emergency recording

- When the device is powered on, it will record a 10-second emergency video when the "Emergency Recording" is pressed or when the device detects a collision. The red progress indicator circle will keep filling up until it is completely filled.
- The progress indicator will disappear at the end of the recording, and an emergency video of 70 seconds or 190 seconds will be automatically collated, and the device then returns to normal video recording mode.

Progress indicator



5. Video recording

Video recording automatically commences when you start your car; you can stop the recording by pressing PAUSE.

(When the MicroSD Card is full, the camera will overwrite the new video on the old file; this is known as "loop recording".)

6. Album

Press the ALBUM button to display the video list; you can then choose the video to play. Click PLAY, to pause the video playback; a message box is displayed with the buttons PLAY and DELETE. Press DELETE to delete the selected video.

This product is designed, manufactured, and assembled in China. The sale and intended operating environment of this product is limited to the United States. As such, part or all of the services and functionalities are not guaranteed to be available when this product is used outside the United States.

IMPORTANT SAFETY GUIDELINES

1. Read these instruction.
2. Clean only with dry cloth.
3. Only use attachments/accessories specified by the manufacturer.
4. Unplug this apparatus during lightning storms or when unused for long periods of time.
5. To get the best usage out of this product, please consistently update to the latest versions of our app and firmware.

NOTICE:

- The values displayed in this device, such as speed, position, and the distance warning to the speed camera set points, may be inaccurate due to the influence of surrounding environment. They are for your reference only.
- The system is used only for non-commercial use, within the maximum limits permitted by applicable law. Xiaoyi does not accept any responsibility for any data loss during the operation.

Note:

"Xiaoyi" and "YI" logo are trademarks of Shanghai Xiaoyi Technology Co.,Ltd.

This device complies with Part 15 of the FCC Rules / Industry Canada licence-exempt RSS standard(s). Operation is subject to the following two conditions: (1) this device may not cause harmful interference, and (2) this device must accept any interference received, including interference that may cause undesired operation.

Le présent appareil est conforme aux CNR d'Industrie Canada applicables aux appareils radio exempts de licence. L'exploitation est autorisée aux deux conditions suivantes : (1) l'appareil ne doit pas produire de brouillage, et (2) l'utilisateur de l'appareil doit accepter tout brouillage radio électrique subi, même si le brouillage est susceptible d'en compromettre le fonctionnement.

Changes or modifications not expressly approved by the party responsible for compliance could void the user's authority to operate the equipment.

This equipment has been tested and found to comply with the limits for a Class B digital device, pursuant to part 15 of the FCC Rules. These limits are designed to provide reasonable protection against harmful interference in a residential installation. This equipment generates uses and can radiate radio frequency energy and, if not installed and used in accordance with the instructions, may cause harmful interference to radio communications. However, there is no guarantee that interference will not occur in a particular installation. If this equipment does cause harmful interference to radio or television reception, which can be determined by turning the equipment off and on, the user is encouraged to try to correct the interference by one or more of the following measures:

- Reorient or relocate the receiving antenna.
- Increase the separation between the equipment and receiver.
- Connect the equipment into an outlet on a circuit different from that to which the receiver is connected.
- Consult the dealer or an experienced radio/TV technician for help.

Under Industry Canada regulations, this radio transmitter may only operate using an antenna of a type and maximum (or lesser) gain approved for the transmitter by Industry Canada. To reduce potential radio interference to other users, the antenna type and its gain should be so chosen that the equivalent isotropically radiated power (e.i.r.p.) is not more than that necessary for successful communication.

C10 USV2.0

Conformément à la réglementation d'Industrie Canada, le présent émetteur radio peut fonctionner avec une antenne d'un type et d'un gain maximal (ou inférieur) approuvé pour l'émetteur par Industrie Canada. Dans le but de réduire les risques de brouillage radioélectrique à l'intention des autres utilisateurs, il faut choisir le type d'antenne et son gain de sorte que la puissance isotrope rayonnée équivalente (p.i.r.e.) ne dépasse pas l'intensité nécessaire à l'établissement d'une communication satisfaisante.

MPE Requirements

To satisfy FCC / IC RF exposure requirements, a separation distance of 20 cm or more should be maintained between the antenna of this device and persons during device operation. To ensure compliance, operations at closer than this distance is not recommended.

Les antennes installées doivent être situées de façon à ce que la population ne puisse être exposée à une distance de moins de 20 cm. Installer les antennes de façon à ce que le personnel ne puisse approcher à 20 cm ou moins de la position centrale de l'antenne. La FCC des États-Unis stipule que cet appareil doit être en tout temps éloigné d'au moins 20 cm des personnes pendant son fonctionnement.

 
FCC ID:2AFIB-YCS1C17
IC:20436-YCS1C17

小蚁行车记录仪（后视镜版）说明书

料材质 ▶ 105无光铜

品尺寸 ▶ 120 x 90mm

图号 ▶ -

料号 ▶ -

变更记录:

2017-11-09 V1.0